

H15 Series BASO® 100% Shutoff Automatic Pilot Valve

The H15 Series pilot valves provide safe lighting and complete shutoff of pilot and main burner gas on a variety of domestic and commercial gas burning equipment. Applications include commercial cooking equipment, room heaters, wall heaters, unit heaters, central heating equipment, crop dryers, dishwashing machines, industrial ovens, and degreasing equipment.

In addition to U.S. and Canadian certifications, the H15 models without a rotor B valve are CE Certified.



Figure 1: H15 Automatic Pilot Valve

Features and Benefits	
<input type="checkbox"/> Compact Design	Permits installation in dimensionally restricted applications
<input type="checkbox"/> Safe Lighting	Allows gas flow only to the pilot burner during lighting
<input type="checkbox"/> Reliable	Proven by thousands of units in service
<input type="checkbox"/> Easy Operation	Provides simple lighting with use of large reset button
<input type="checkbox"/> Approved Worldwide (Models without Rotor B Valve Only)	Broadens applications to include global markets

Application

The H15 series automatic pilot valves provide safe lighting and complete shutoff of pilot and main burner gas. They are designed for standing pilot applications and can be used with natural gas, Liquefied Petroleum (LP) gas, or LP gas-air mixtures at pressures up to 35 mbar (0.5 psi). Models without a rotor B valve are suitable for operation over a temperature range of -34 to 80°C (-30 to 175°F). Models with a rotor B valve are suitable for operation over a temperature range of 0 to 80°C (32 to 175°F). The H15_B and H15_R models are suitable for operation over a temperature range of -29 to 150°C (-20 to 300°F).

The use of single function components provides maximum flexibility in manifold makeup. By combining the H15 pilot valve with other single function components (pressure regulator, automatic gas valve, manual valve), you can meet the exact requirements of a wide variety of applications.

Description

H15 valves are 100% shutoff devices with compact, cast aluminum valve bodies. A rotor B valve is provided as an option for manual adjustment of the pilot flame (see Figure 2). The flow interruption feature allows gas to flow only to the pilot during the lighting operation.

Mounting

You may mount the H15 valves in any convenient position.

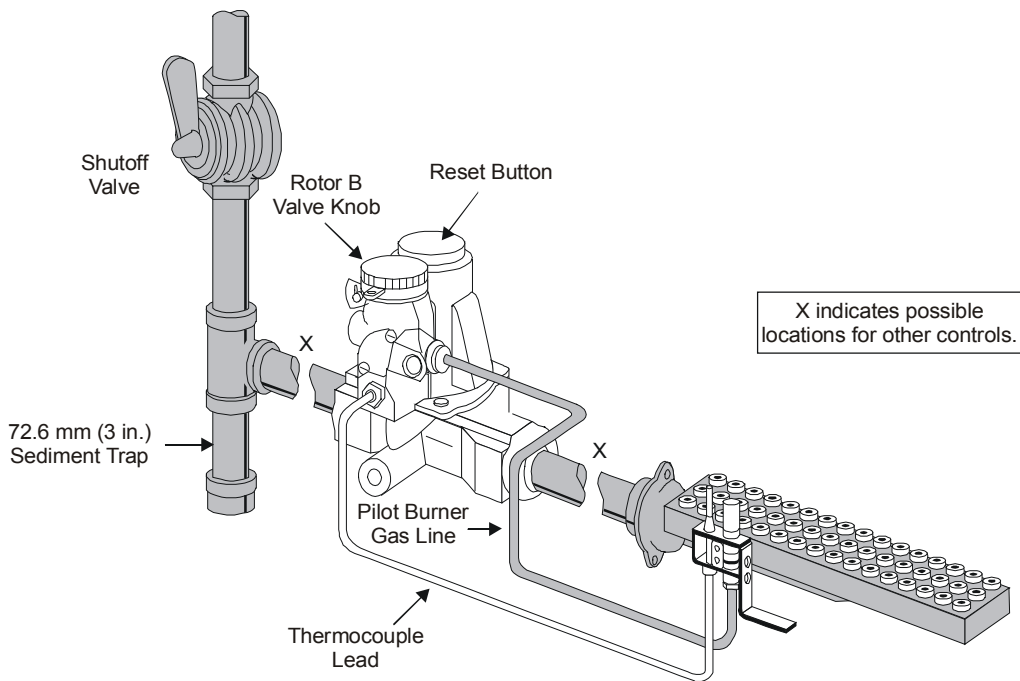


Figure 2: Typical Installation Showing Rotor B Valve

Dimensions

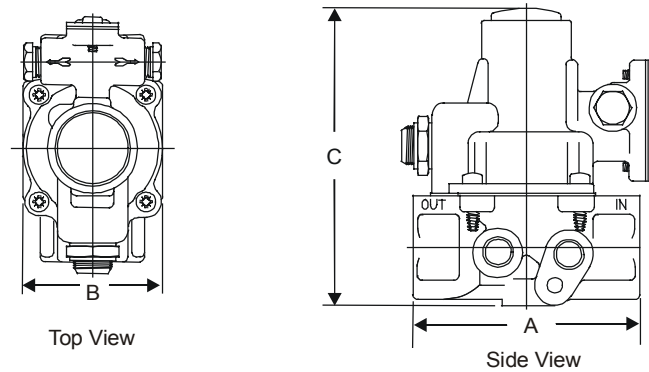


Figure 3: Internal Pilot Gas Valve Dimensions

Table 1: Internal Pilot Gas Valve Dimensions

Product Number	A Maximum Length		B Maximum Width		C Maximum Height	
	mm	in.	mm	in.	mm	in.
H15AA	74	2.90	46	1.81	94	3.69
H15CA	86	3.40	49	1.93	100	3.93
H15CB	86	3.40	49	1.93	100	3.93
H15DA	86	3.40	49	1.93	100	3.93
H15DB	86	3.40	49	1.93	100	3.93
H15FA	89	3.50	68	2.68	117	4.62

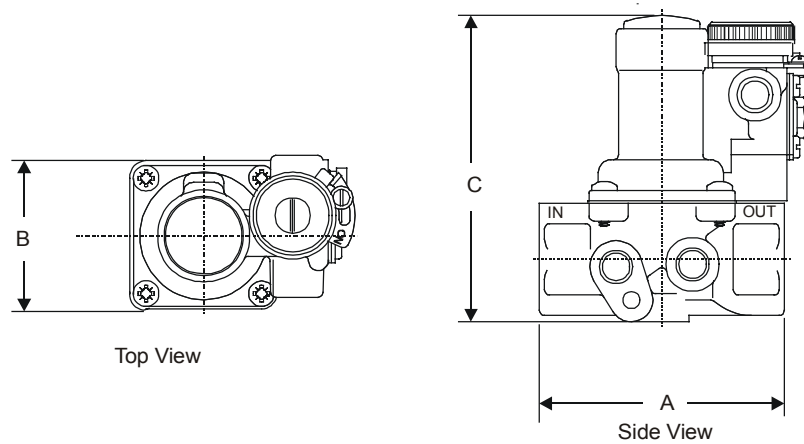


Figure 4: Internal Pilot Gas Valve with Rotor B Valve Dimensions

Table 2: Internal Pilot Gas Valve with Rotor B Valve Dimensions

Product Number	A Maximum Length		B Maximum Width		C Maximum Height	
	mm	in.	mm	in.	mm	in.
H15CH	844	3.310	66	2.59	97	3.819
H15DH	89	3.50	76	3.00	1170	4.62

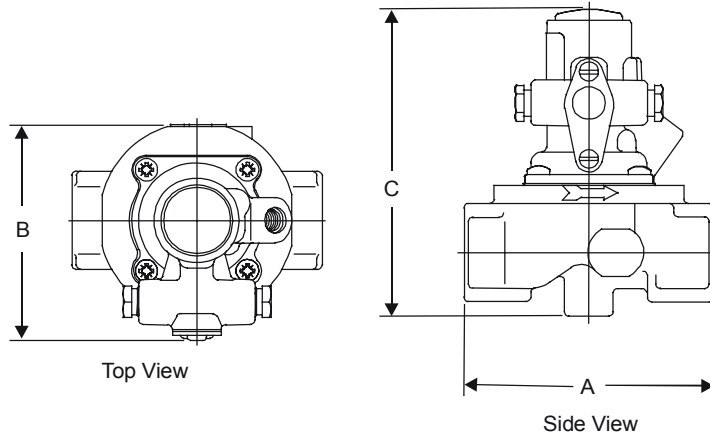


Figure 5: External Pilot Gas Valve Dimensions

Table 3: External Pilot Gas Valve Dimensions

Product Number	A Maximum Length		B Maximum Width		C Maximum Height	
	mm	in.	mm	in.	mm	in.
H15AR	74	2.90	46	1.81	94	3.69
H15CQ	86	3.40	49	1.93	100	3.93
H15DQ	86	3.40	49	1.93	100	3.93
H15EQ	65	2.56	74	3.00	105	4.12
H15FQ	89	3.50	76	3.00	117	4.62
H15HQ	65	2.56	66	2.59	97	3.81
H15HR	65	2.56	66	2.59	97	3.81

Flow Capacity

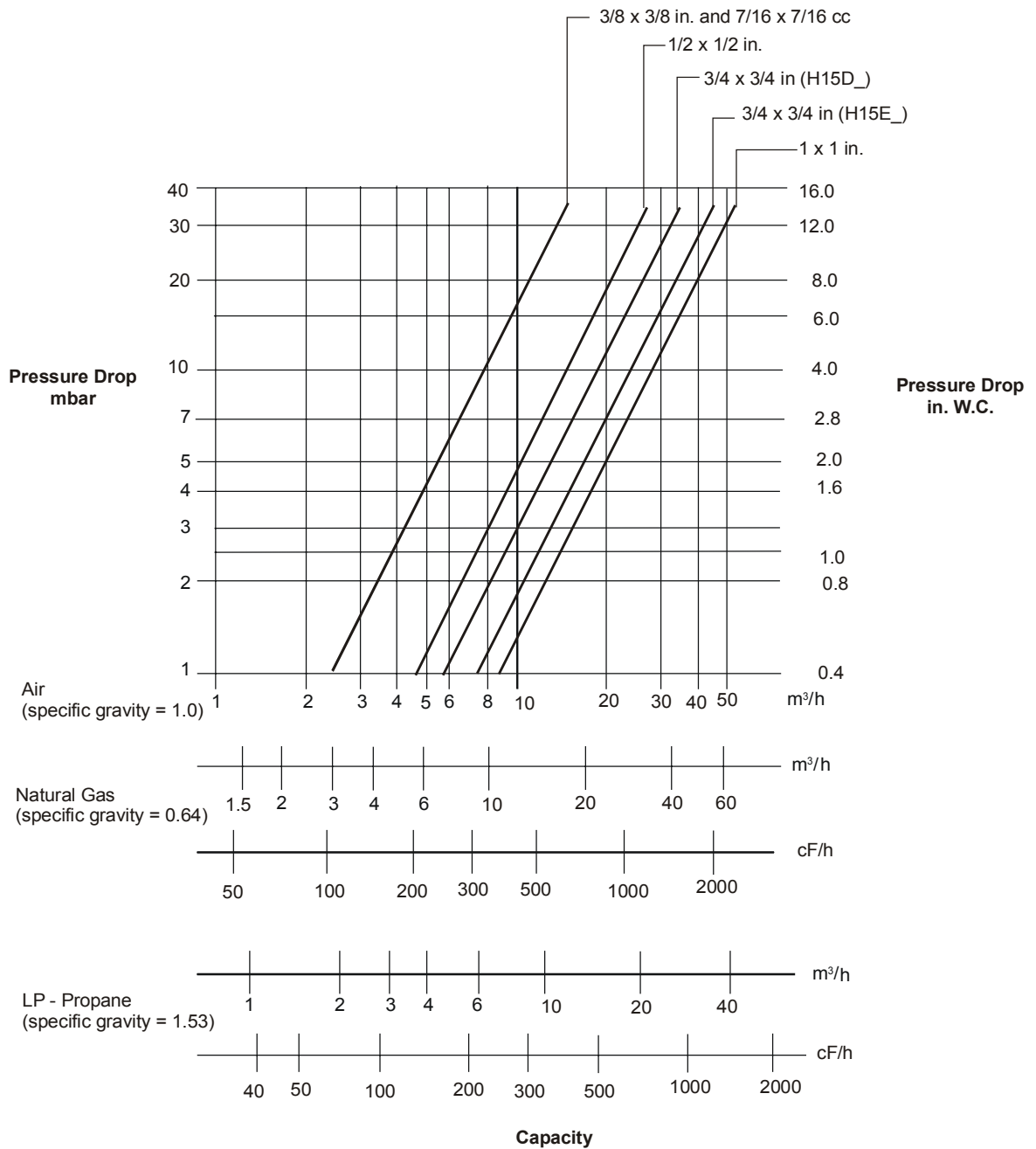
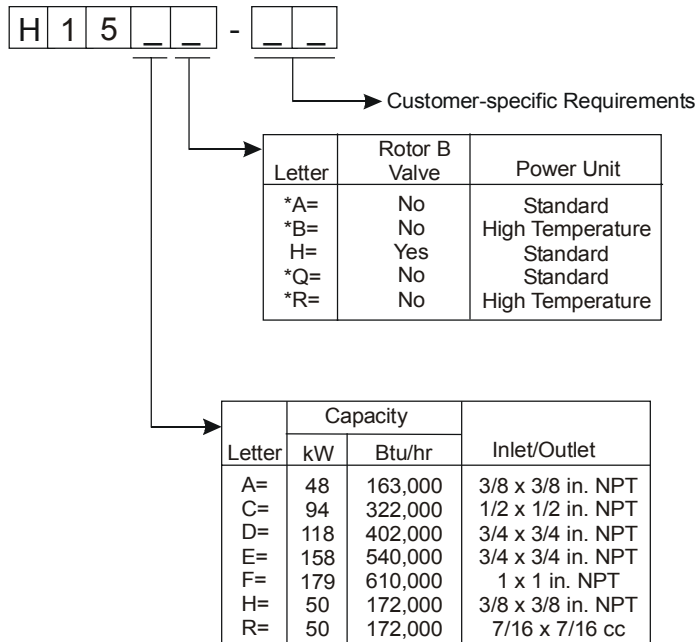


Figure 6: Maximum Flow Capacity

Ordering Information



*Indicates CE Certified.

The presence of a particular construction in this information does not guarantee its availability. Consult Johnson Controls for available constructions.

Figure 7: Ordering Matrix

Technical Specifications

Product	H15 Series BASO 100% Shutoff Automatic Pilot Valve
Maximum Operating Pressure	35 mbar (0.5 psi)
Recommended Thermocouple Lead Lengths	K15: 305 to 1,220 mm (12 to 48 in.) K16: 305 to 1,830 mm (12 to 72 in.) K19: 457 to 1,830 mm (18 to 72 in.)
Permissible Ambient (Surface) Temperature	-34 to 80°C (-30 to 175°F) models without rotor B valve 0 to 80°C (32 to 175°F) models with rotor B valve -29 to 150°C (-20 to 300°F) H15_B and H15_R models only
Inlet and Outlet Body Connections	3/8, 1/2, 3/4, or 1 in. NPT and 7/16 cc
Valve Torsion Group	Group 2 (EN 125)
Gas Valve Family	Class B
Types of Gas	Natural, Liquefied Petroleum (LP), and LP gas-air mixtures
Packaging	Bulk pack supplied to original equipment manufacturer (individual pack optional)
Bulk Pack Quantity	20, 30, 32, and 40 (depending on valve size)
Bulk Pack Weight	11 to 19 kg (24 to 42 lb)
Agency Listing	CSA (AGA/CGA) Certificate Number 176835-1074130 Australian Gas Association Certificate Number 4236 EN/EC Type Examination Certificate Number E3735 (models without rotor B valve only) UL File Number MH2926 (H15CA, CH, and DA models only)
Specification Standards	ANSI Z21.20-1997 ANSI Z21.20a-1998 ANSI Z21.21-2000 ANSI Z21-78-1997, CGA 6.20-M97 ANSI Z21.78a-1998, CGA 6.20a-M98 ANSI Z21.78b-1999, CGA 2.20b-M99 EN 125 UL Standard 372

The performance specifications are nominal and conform to acceptable industry standards. For application at conditions beyond these specifications, consult the local Johnson Controls office. Johnson Controls, Inc. shall not be liable for damages resulting from misapplication or misuse of its products.

Refer to the *H15 Series BASO 100% Shutoff, Automatic Pilot Valve Installation Instructions (Part No. 24-8711-390)* for necessary information on the installation, use, and servicing of this product.



Controls Group
507 E. Michigan Street
P.O. Box 423
Milwaukee, WI 53201

Published in U.S.A.
www.johnsoncontrols.com